



Professional streetlight luminaire for LED light sources.

TECHNICAL DATA	Mounting: on pillar, on outriggers Body: high pressure die-cast aluminum Lateral Surface Wind Exposed: 0.049 m ² Colour: gray, graphite Diffuser: tempered glass
ELECTRICAL DATA	Power supply efficiency: >93% Power: 220-240V 50/60Hz Includes light source: yes Type of equipment: ED Electrical connection: max 3x2,5 mm ² wire, max 2x2,5 mm ² wire
OPTICAL DATA	Light distribution: asymmetric Way of lighting: direct Type of optic: 01 - for freeways, 02 - for express roads, 03 - for local roads, 04 - for town roads, 05 - for residential area roads, 07 - for area lighting
ADDITIONAL INFO	Available on request: DALI, DIM 1..10V, LLOC, twilight sensor, knife switch, 10kV surge protection, NTC Additional information: Tilt adjustment jump: 5° Operating temperature range: -35°C - +40°C / -35°C - +30°C Other remarks: mounting on pillars or outriggers with a diameter of 60mm and 76mm, luminaires with lumen output over 22000 lm operate in the temperature range of -35°C - +30°C.
GENERAL DATA	Lifetime (L80B10): 80 000 h Lifetime (TM21 L90B10): 60 000 h Warranty: 3 years + 2 years after project registration Application: freeways, express roads, local roads, town roads, residential area roads, area lighting



Code	Protection Class	Power LED [W]	Luminaire power [W]	Lumen LED [lm]	Lumen luminaire [lm]	Efficacy [lm/W]	Colour temperature [K]	CRI/Ra
Type: Regulation 0° ... +15°								
130192.5L14.11	I	45	52	6200	5250	101	4000	>70
13019X.5L05.1X	I	103	113	12500	11650	103	4000	>70
13019X.5L05.2X	II	103	113	12500	11650	103	4000	>70
13019X.5L06.1X	I	103	113	13000	11850	105	5700	>70
13019X.5L06.2X	II	103	113	13000	11850	105	5700	>70
13019X.5L08.1X	I	153	166	18500	17100	103	4000	>70
13019X.5L08.2X	II	153	166	18500	17100	103	4000	>70
13019X.5L09.1X	I	153	166	19000	17650	106	5700	>70
13019X.5L09.2X	II	153	166	19000	17650	106	5700	>70
13019X.5L11.1X	I	190	206	24050	22000	107	4000	>70
13019X.5L12.1X	I	190	206	24050	22000	107	5700	>70
Type: Regulation -15° ... 0°								
13019X.5L05.1X1	I	103	113	12500	11650	103	4000	>70
13019X.5L05.2X1	II	103	113	12500	11650	103	4000	>70
13019X.5L06.1X1	I	103	113	13000	11850	105	5700	>70
13019X.5L06.2X1	II	103	113	13000	11850	105	5700	>70
13019X.5L08.1X1	I	153	166	18500	17100	103	4000	>70
13019X.5L08.2X1	II	153	166	18500	17100	103	4000	>70
13019X.5L09.1X1	I	153	166	19000	17650	106	5700	>70

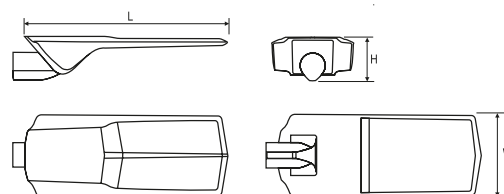
Luminous flux tolerance +/- 10%.

Code	Protection Class	Power LED [W]	Luminaire power [W]	Lumen LED [lm]	Lumen luminaire [lm]	Efficacy [lm/W]	Colour temperature [K]	CRI/Ra
Type: Regulation -15° ... 0°								
13019X.5L09.2X1	II	153	166	19000	17650	106	5700	>70
13019X.5L11.1X1	I	190	206	24050	22000	107	4000	>70
13019X.5L12.1X1	I	190	206	24050	22000	107	5700	>70

13019	□	.5L05.1	□
			Type of optic
			1 O1 - for freeways
			2 O2 - for express roads
			3 O3 - for local roads
			4 O4 - for town roads
			5 O5 - for residential area roads
			7 O7 - for area lighting
			Colour
	2	□	gray
	5	■	graphite

Code	Dimensions [mm] L W H	Pallet quantity	Quantity in package	Net weight [kg]
Type: Regulation 0° ... +15°				
130192.5L14.11	730 295 135	24	1	11.0
13019X.5L05.1X	730 295 135	24	1	11.0
13019X.5L05.2X	730 295 135	24	1	11.0
13019X.5L06.1X	730 295 135	24	1	11.0
13019X.5L06.2X	730 295 135	24	1	11.0
13019X.5L08.1X	730 295 135	24	1	11.2
13019X.5L08.2X	730 295 135	24	1	11.2
13019X.5L09.1X	730 295 135	24	1	11.2
13019X.5L09.2X	730 295 135	24	1	11.2
13019X.5L11.1X	730 295 135	24	1	12.4
13019X.5L12.1X	730 295 135	24	1	12.4

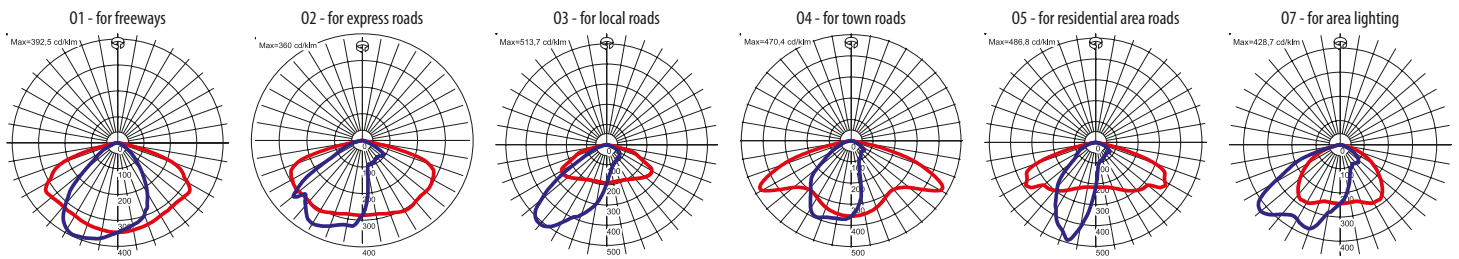
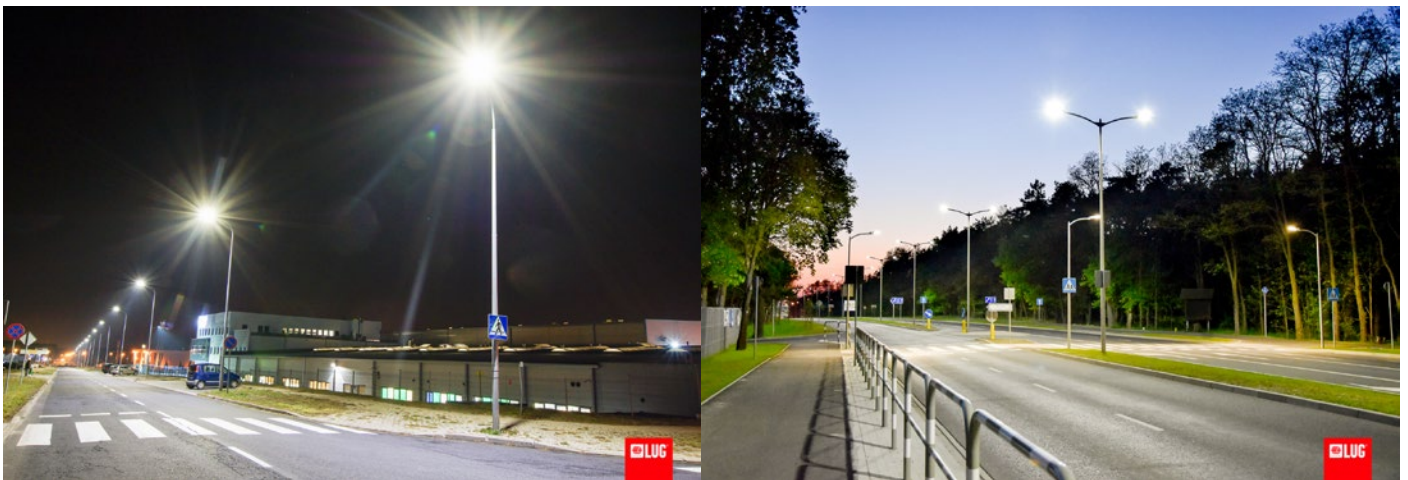
Type: Regulation -15° ... 0°				
13019X.5L05.1X1	730 295 135	24	1	11.0
13019X.5L05.2X1	730 295 135	24	1	11.0
13019X.5L06.1X1	730 295 135	24	1	11.0
13019X.5L06.2X1	730 295 135	24	1	11.0
13019X.5L08.1X1	730 295 135	24	1	11.2
13019X.5L08.2X1	730 295 135	24	1	11.2
13019X.5L09.1X1	730 295 135	24	1	11.2
13019X.5L09.2X1	730 295 135	24	1	11.2
13019X.5L11.1X1	730 295 135	24	1	12.4
13019X.5L12.1X1	730 295 135	24	1	12.4



OTHER PICTURES



Luminous flux tolerance +/- 10%.

LIGHT BEAM CURVES**OTHER PROJECTS**

Gorzowska Street, Zielona Gora, Poland

Zjednoczenia Avenue, Zielona Góra, Poland

Luminous flux tolerance +/- 10%.